



HIKMICRO INDUSTRIAL PRODUCT

SEE THE WORLD IN A NEW WAY

DISTRIBUÉ PAR / DISTRIBUTED BY:



QUEBEC
164, St-Jean-Baptiste
Mercier, QC J6R 2C2
T : (450) 691-9090

ONTARIO
275 Sheldon Drive, Unit 3
Cambridge, ON N1T 1A3
T : (519) 894-9069

www.qnde.ca



CONTENTS

1

INTRODUCTION

ABOUT HIKMICRO	04
COMPANY STRENGTHS	05
APPLICATIONS	08

3

ACOUSTIC CAMERAS

AI SERIES ^{NEW}	33
--------------------------------	----

2

HANDHELD THERMAL CAMERA

MINI SERIES ^{NEW}	13
E SERIES	15
B SERIES	17
POCKET SERIES	19
M SERIES	21
G SERIES	25
SP SERIES ^{NEW}	29

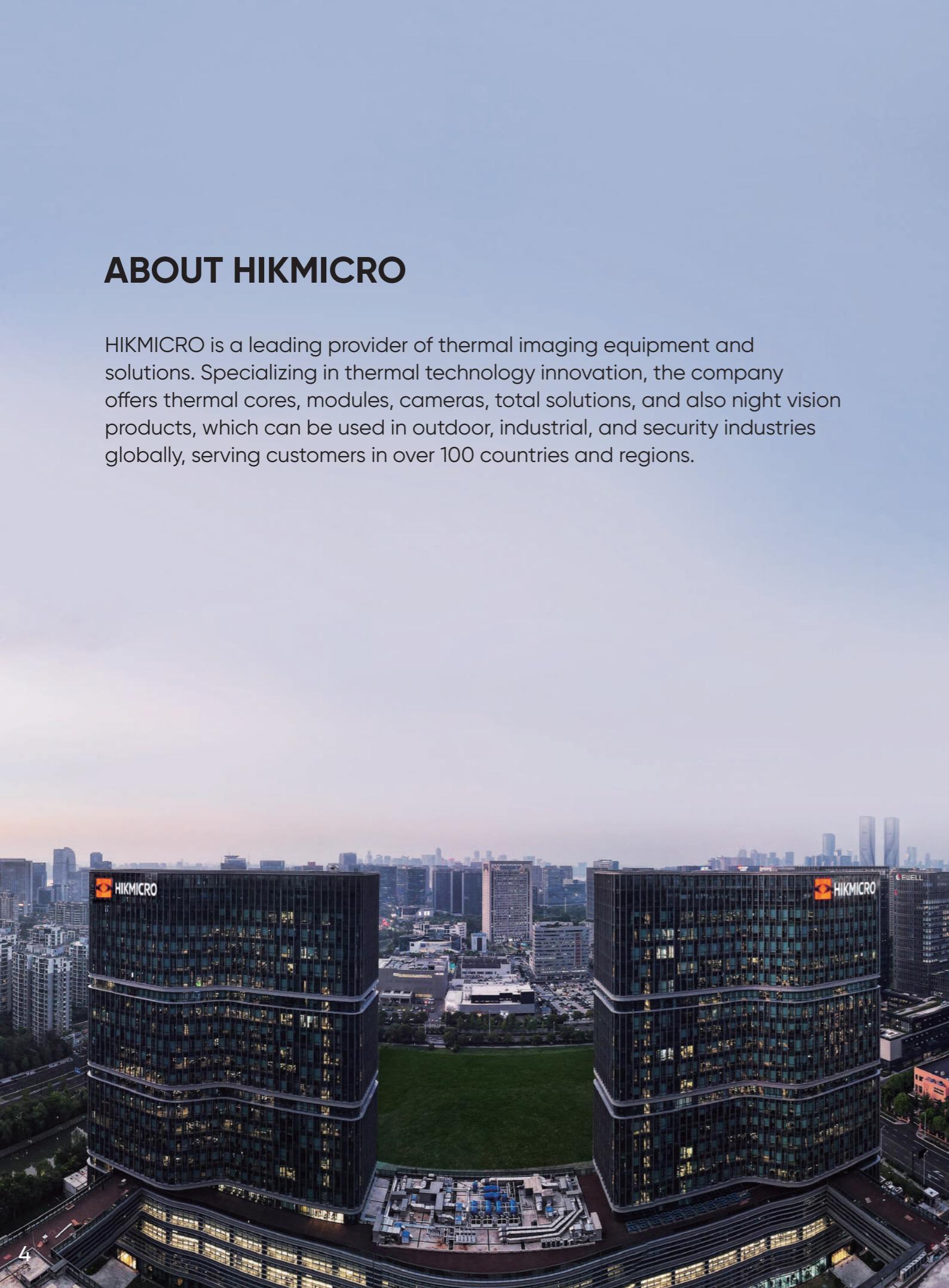
4

SOFTWARE SUPPORT

HIKMICRO VIEWER	35
HIKMICRO ANALYZER	36
HIKMICRO INSPECTOR	37

ABOUT HIKMICRO

HIKMICRO is a leading provider of thermal imaging equipment and solutions. Specializing in thermal technology innovation, the company offers thermal cores, modules, cameras, total solutions, and also night vision products, which can be used in outdoor, industrial, and security industries globally, serving customers in over 100 countries and regions.



COMPANY STRENGTHS

Industry Leading Warranty

HIKMICRO provides a 3-10-2 warranty period (from the date of purchase) that exceeds the industry standard level of handheld thermography products. For details, please refer to the following:

- 3 years components and labor coverage for the full product.
- 10 years of coverage for the detector - the most important part of the whole product!
- 2 years of coverage for the rechargeable battery.



Local Repair Service

- HIKMICRO provides customers with comprehensive maintenance services and responds to failures in the shortest possible time, minimizing camera downtime.

Local Support and Training Service

- International subsidiaries and local offices provides localized marketing and technical support. Professional technicians train the staff of authorized stores regularly.
- HIKMICRO provides technical consultation via the official website, email, and 24-hour hotline.

Global Calibration Services

- HIKMICRO is pleased to offer calibration services through one of our global sites or factory-authorized service centers. Contact your local office for details.



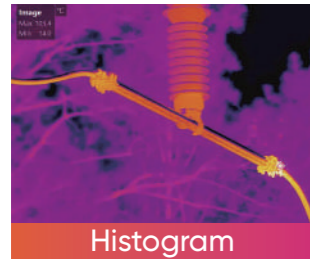
PRODUCT STRENGTHS

| Image Frequency

With a minimum of 25 Hz and some systems up to 50 Hz, you'll experience ultra-smooth video and measurements while panning across scenes or viewing moving targets.

| HIKMICRO advanced algorithms

Linear and histogram color distribution is one of the HIKMICRO image enhancement algorithms, which can measure high or low-temperature targets in different scenarios and create sharp thermal images for more accurate and reliable measurements.



| Accuracy

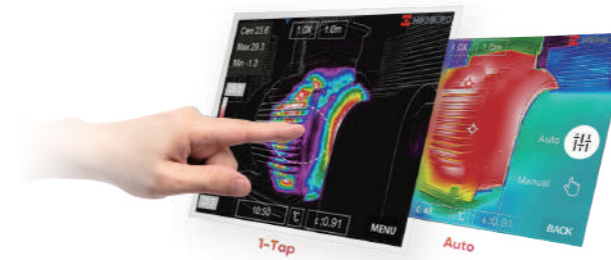
Up to $\pm 1^\circ\text{C}$ accuracy and repeatable temperature measurements based on our high stability detector, optics design, and quality control.

| Sensitivity

$< 0.04^\circ\text{C}$ smallest measurable temperature difference, it is easier to detect the subtle heat losses or overheating in buildings, electrical systems, etc.

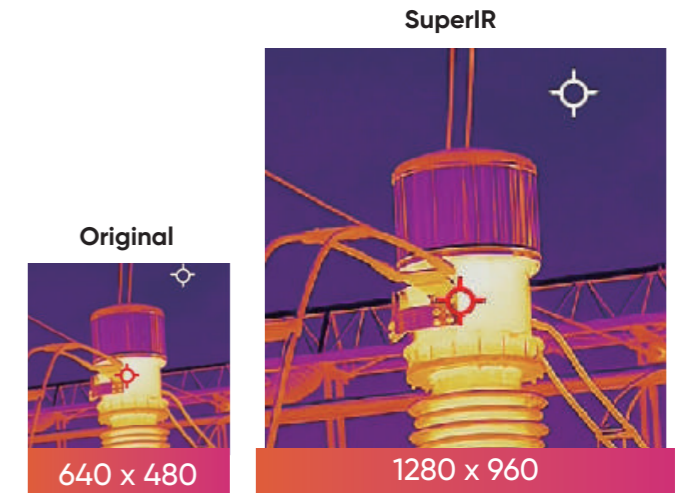
| 1-Tap Level & Span

Allows you to focus on one area of the image by narrowing the span with 1-Tap of the screen and reducing background noise.



| SuperIR

HIKMICRO SuperIR achieves up to 4 times more pixels through our proprietary neural network technology, which boosts image quality, enhances image details, sharpens edges, and reduces image noise.



DISTRIBUÉ PAR / DISTRIBUTED BY:



QUEBEC
164, St-Jean Baptiste
Mercier, QC J6R 2C2
T: (450) 691-9090

ONTARIO
275 Sheldon Drive, Unit 3
Cambridge, ON N1T 1A3
T: (519) 894-9069

1-800-361-3630
WWW.QNDE.CA

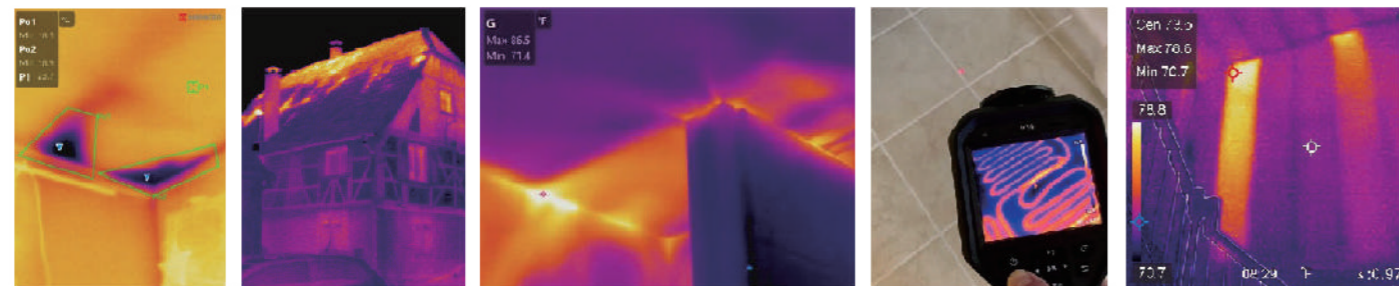
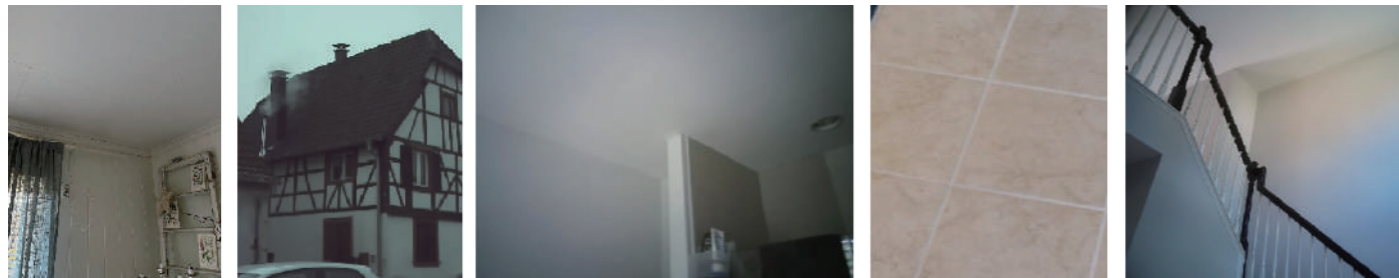


BUILDING INSPECTION APPLICATION



In building inspections, missing or damaged insulation, building envelope air leaks, and moisture intrusion can be very difficult to find before they become serious enough to damage or destroy building contents. Thermal cameras can and have been utilized in the discovery of otherwise undetectable heat, air, and moisture anomalies in all types of structures.

WHAT WE SEE



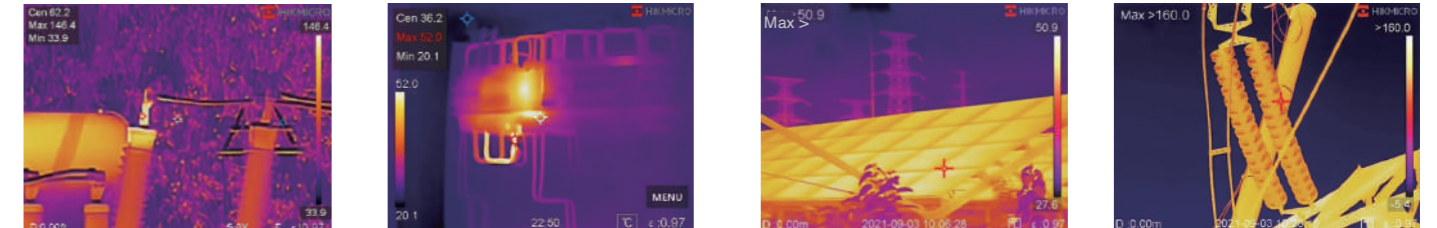
Water Leaks Heat Loss Air Leaks Radiant Floor Heating Insulation Voids

ELECTRIC UTILITIES APPLICATION

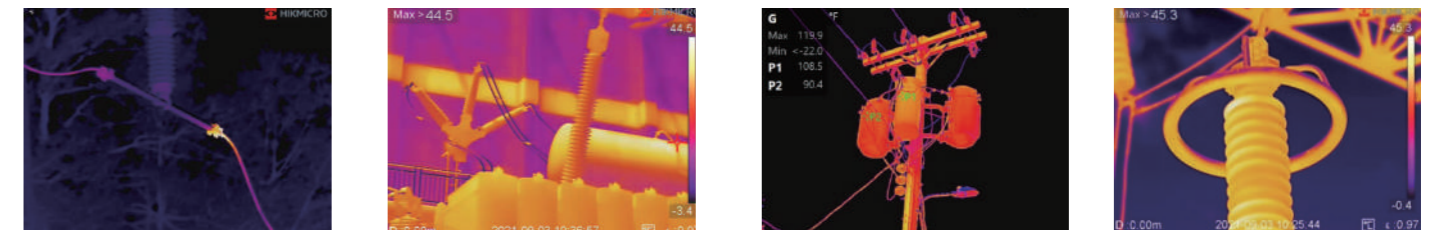


Managing equipment and assets associated with the transmission and distribution of electrical energy is critical to long term system efficiency and safety. Thermal imaging enables added safety inspections, proactively inspect, monitor, and plan for routine maintenance before small issues become catastrophic.

WHAT WE SEE



Hot Bushing Hot Breaker Solar Panel Inspection Insulator



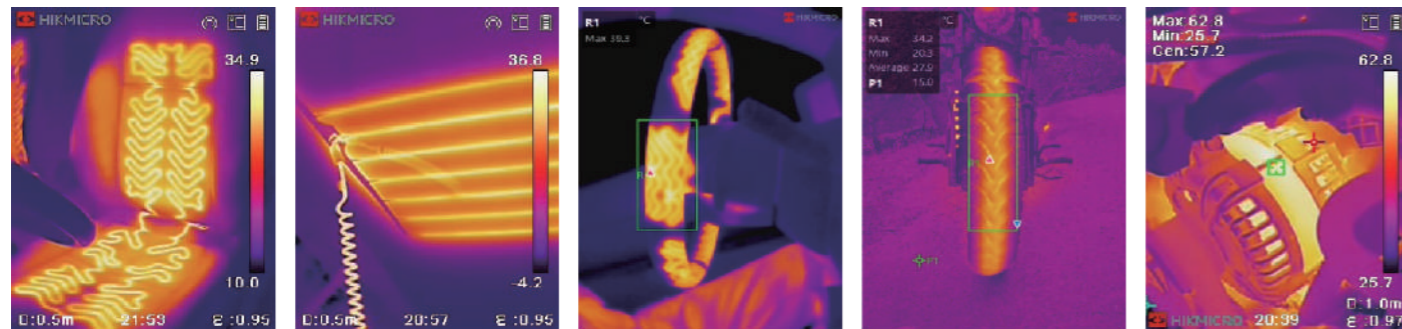
Connector Issues Isolating Switch Transformer Temp Surge Arrester

AUTOMOTIVE APPLICATION



Thermal imaging brings hidden details to the forefront and isolates the issues prior to any disassembly saving countless hours in the process. Quickly check items including passenger comfort systems, defog/defice operations, parasitic voltage draw, bearings/gears, cooling/radiators, exhaust systems, tire wear, and differences in combustion processes between cylinders.

WHAT WE SEE



Seats Heater
Seat Heater Operation

Window Heater

Wheel Heater
Steering Wheel Heat

Front Tire
Tire Heat And Wear Pattern

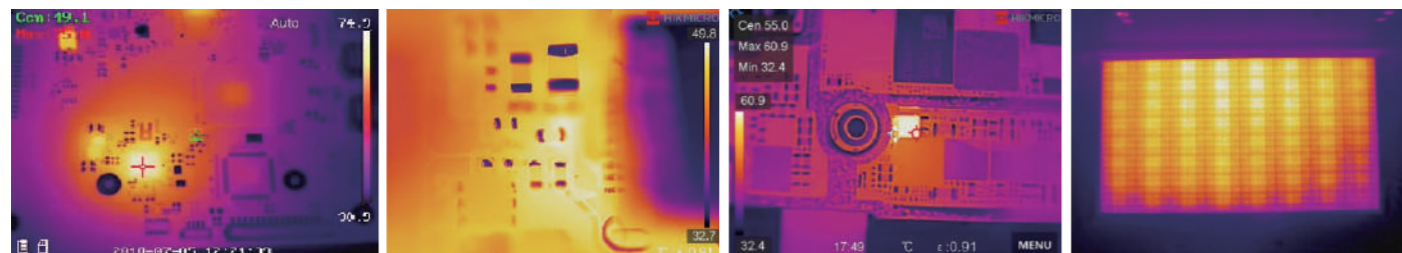
Engine
Engine Systems

ELECTRICAL COMPONENTS APPLICATION



Various types of tests and inspections are performed through traditional methods to detect defects, problems, and failures in PCBs that require improvement. But traditional methods have usually proven to be low efficiency, health hazards, complicated, and low definition.

WHAT WE SEE



PCB

PCB

PCB

PCB

DISTRIBUÉ PAR / DISTRIBUTED BY:



QUEBEC
164, St-Jean Baptiste
Mercier, QC J6R 2C2
T: (450) 691-9090

ONTARIO
275 Sheldon Drive, Unit 3
Cambridge, ON N1T 1A3
T: (519) 894-9069

1-800-361-3630
WWW.QNDE.CA



INDUSTRIAL HANDHELD THERMAL CAMERAS

Industrial handheld thermal cameras are an ideal solution that provides accurate non-contact temperature measurement and heat distribution image display for electrical predictive maintenance, building inspection, HVAC inspection, manufacturing monitor, etc. HIKMICRO's industrial handheld thermal cameras have been used widely in detecting temperature anomalies before a fire starts, detecting radiator efficiency for HVAC inspection, searching for heat loss in buildings, and finding hot spots and invisible defects on mechanical or electrical systems that could indicate a potential problem. They are also used for surveying areas that are hard to reach with conventional measurement tools.

MINI2 SERIES

Make your phone smarter with HIKMICRO Thermal



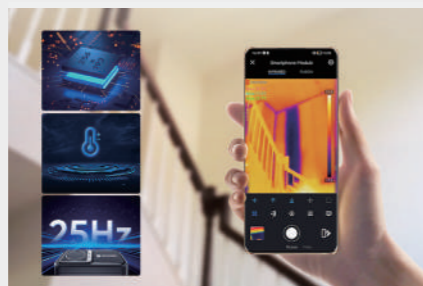
Multiple Product Options

The Mini2 series offers wide-angle and manual focus options. The Mini2Plus with manual focus lens provides a clear view of small objects such as electronic components or distant larger objects like electrical or mechanical equipment from a safe distance. The Mini2 with its 50° wide-angle lens is ideal for quickly scanning walls, facades, and large objects.



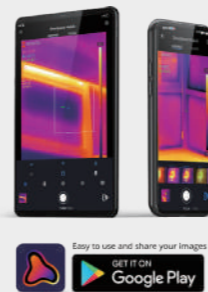
Superior Image Clarity & Smooth Video

With 256x192 IR resolution/49,152 pixels and thermal sensitivity <math><0.04^{\circ}\text{C}</math> sensor, it provides higher-definition images, and it is easier to spot subtle heat loss or gain in the electrical system not visible to the naked eye. 25 Hz image refresh provides a smooth image and video while panning across scenes or viewing moving items.



Professional Viewer APP

Compatible with our free HIKMICRO Viewer APP for Android (Type-C) smartphones or tablets. It provides a user-friendly user interface and powerful temperature measurement and analysis functions, including Infrared/Fusion Image Mode, 15 Color Palettes, 9 measurement areas, and image share.



User-Friendly Experience

Instantly attaches to your Android smartphone or tablet and is ready to go in seconds. The HIKMICRO Mini2 series is battery-free so you'll never need to charge it up or find a charger cable. It's powered by your phone, designed to run on very little power to maximize your mobile device run time, and ready whenever you are.

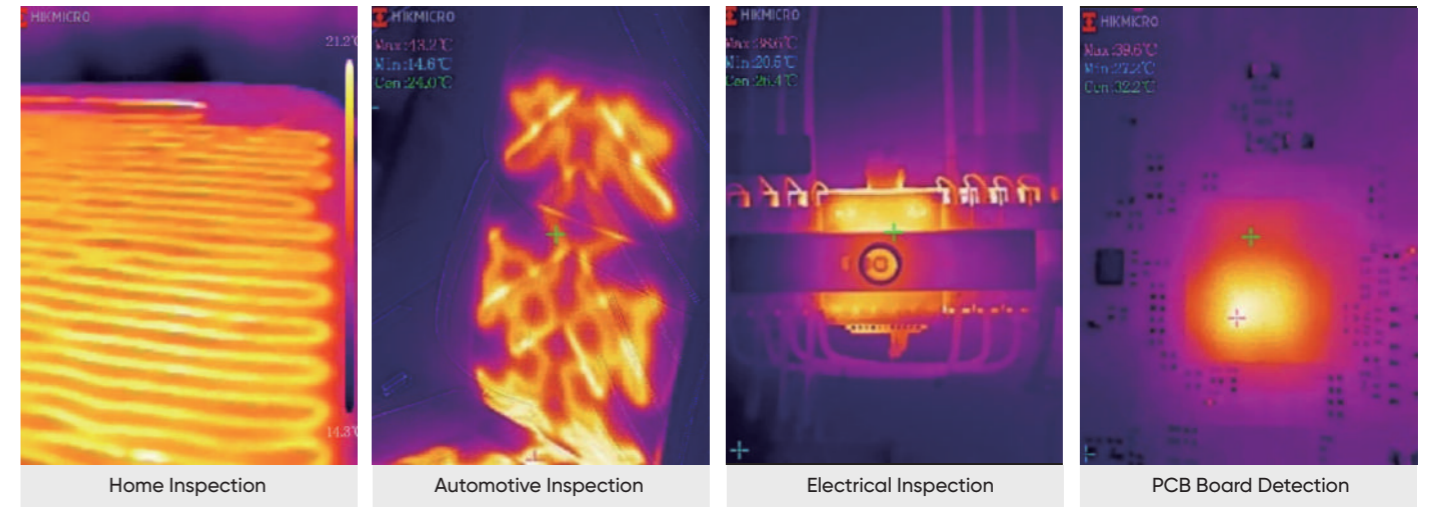
Portable yet Durable

Designed for where you work, live, or relax. It'll fit in your pocket, tool bag, or anywhere convenient for quick and easy access. With IP40-rated aluminum alloy housings, pass strict drop tests up to 1 meter (3.3 feet), allowing you to work with confidence in most work environments.

Multiple Practical Accessories

A 40 cm (15.75 in) extending cord connects between your device and the camera allowing remote viewing, and inspection through narrow, confined openings, or difficult-to-reach places. Also included is an 18 mm extended connector to accommodate smartphones or tablets in a protective case. A protective case is provided for storing your camera and keeping it free of scratches.

APPLICATIONS



WHAT'S IN THE BOX



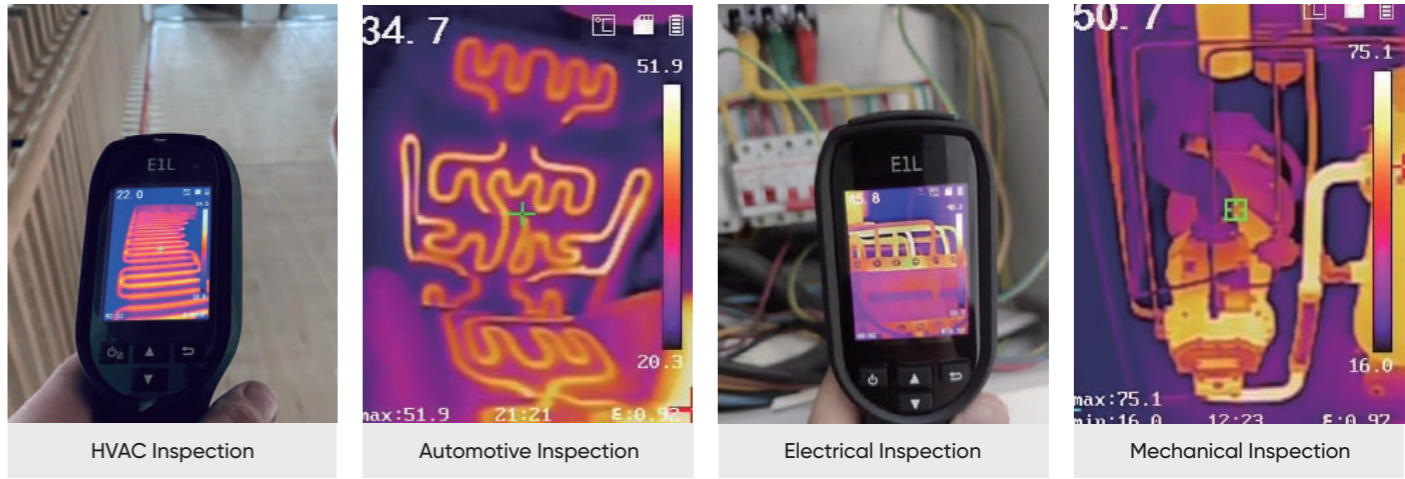
Model No		Mini2	Mini2Plus
Infrared Image	IR Resolution	256 × 192 (49,152 pixels)	
	NETD	<math><40\text{ mK}</math> (@ 25 °C, F#=1.0)	
	Image Frequency	25 Hz	
	Field of View (FOV)	50° × 37.5°	25° × 18.8°
Image Display	Focus Mode	Focus Free	Manual Focus
	Visual Camera	Phone Camera	
Measurement and Analysis	Object Temperature Range	-20 °C to 350 °C (-4°F to 662°F)	
	Accuracy	Max (±2°C/3.6°F, ±2%), applicable 60 sec after start-up when the ambient temperature 15°C to 35°C (59°F to 95°F) and object temperature above 0°C (32°F)	
General	Measurement Tools	Center Spot, Hot Spot, Cold Spot User-definable: 3 spots, 1 line, and 3 rectangles.	
	Weight	Approx. 20 g (0.044 lb)	Approx. 24 g (0.053 lb)
	Dimension	42 × 22.5 × 11.2 mm (1.38 × 0.74 × 0.37 in)	26.6 × 26.6 × 25 mm (1.05 × 1.05 × 0.98 in)

E SERIES

Compact thermal imaging camera for troubleshooting



APPLICATIONS



WHAT'S IN THE BOX



OPTIONAL ACCESSORIES



Long Battery Life

Work all day on a single charge.

Laser Pointer

Laser Pointer helps show the position of the center point on actual object.

Efficient Temperature Measurement

Track the temperature of the Center Spot, Hot Spot, Cold spot automatically.

Light Weight

350 g (12.4 oz) compact design, easy to carry.

Rugged & Durable Design

IP54 rated for protection against water and dust. Featuring 2-meter (6.6ft) drop protection, suitable for industrial use.

High Image Quality

A highly sensitive VOx detector (NETD < 40 mK) provides a distinct thermal vision of the target.

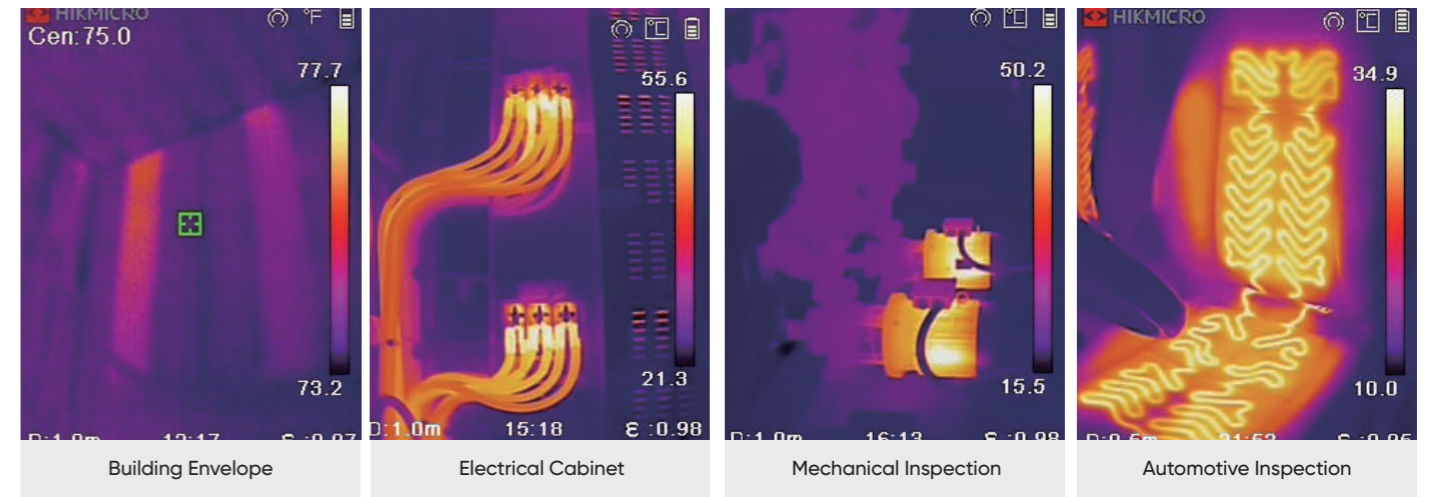
Model No	E11	
Infrared Image	IR Resolution	160 × 120 (19,200 pixels)
	NETD	< 40 mK (@ 25 °C, F#=1.0)
	Image Frequency	25 Hz
	Field of View (FOV)	37.2° × 50°
	Minimum Focus Distance	0.15 m (0.49 ft)
Image Display	Display	240 × 320 Resolution, 2.4" LCD Screen
	Object Temperature Range	-20 °C to 550 °C (-4 °F to 1022 °F)
Measurement and Analysis	Accuracy	Max (±2°C/3.6°F, ±2%), for the ambient temp. 15°C to 35 °C (59 °F to 95 °F) and object temp. above 0 °C (32°F)
	Image Format	JPEG
General	Weight	Approx. 350 g (0.77 lb)
	Battery Operating Time	Approx. 8 hours

B SERIES

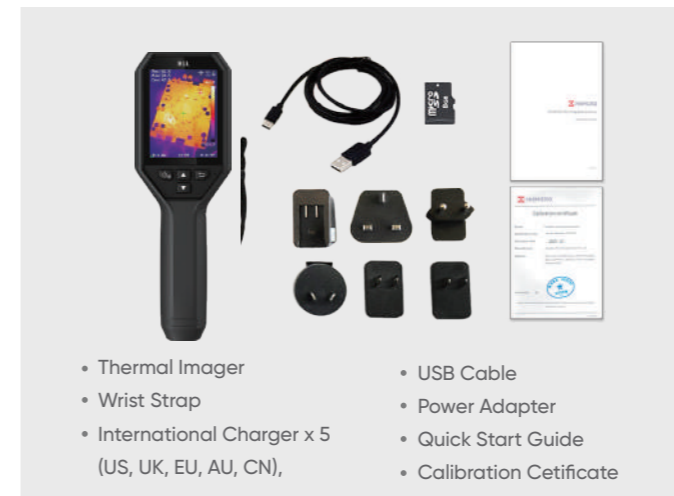
Compact and easy-to-use thermal camera for daily operation



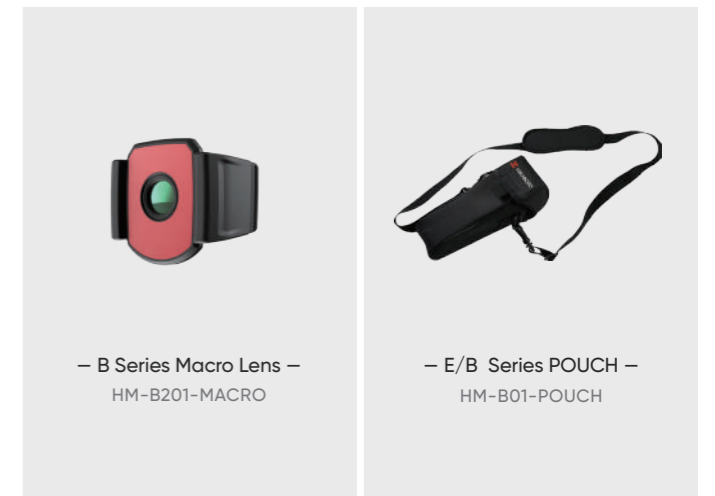
APPLICATIONS



WHAT'S IN THE BOX

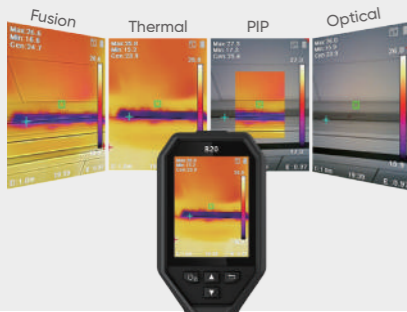


OPTIONAL ACCESSORIES



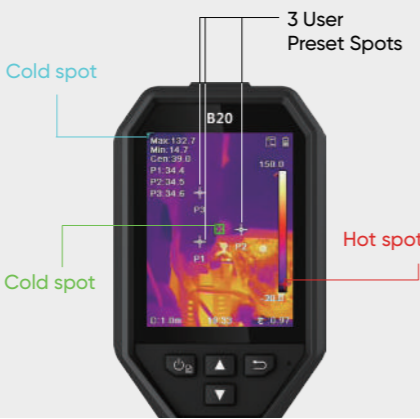
Multiple Image Modes

Fusion, Thermal, PIP and Visual modes to suit your preferred view. (B11, B20 only)



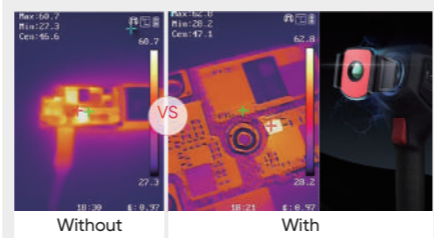
Efficient Temperature Measurement

Track the temperature of Center, Hot, Cold spot and 3 Custom spots automatically.



Innovative Macro Mode

Using a clip-on macro lens, the B series cameras can see details as small as 500 microns and allow you to take accurate temperature readings on small objects, such as components on printed circuit boards or assemblies.



3.2" Color LCD

View the details of your images on the large, class-leading LCD screen.

LED Work Light

The LED work light allows you to work safely in dim or dark area.

Wi-Fi Connectivity

Connect to mobile devices via built-in Wi-Fi and the HIKMICRO Viewer App to quickly share your images.

Model No		B1L	B11	B20
Infrared Image	IR Resolution	160 × 120 (19,200 pixels)	192 × 144 (27,648 pixels)	256 × 192 (49,152 pixels)
	NETD	< 40 mK (@ 25 °C, F#=1.0)		
	Image Frequency	25 Hz		
	Field of View (FOV)	32.9° × 44.4°	27.8° × 37.2°	37.2° × 50.0°
	Minimum Focus Distance	0.3 m (0.98 ft)		
Image Display	Visual Camera	N/A	1600 × 1200 (2 MP)	
	Focus Mode	Focus Free		
Measurement and Analysis	Object Temperature Range	-20°C to 550°C (-4°F to 1022°F)		
	Accuracy	Max (±2°C/3.6°F, ±2%), for the ambient temp. 15°C to 35 °C (59 °F to 95 °F) and object temp. above 0 °C (32°F)		
General	Image Format	JPEG		
	Wi-Fi	802.11 b/g/n (2.4GHz)		
	Battery Operating Time	Approx. 8 hours	Approx. 6 hours	Approx. 6 hours

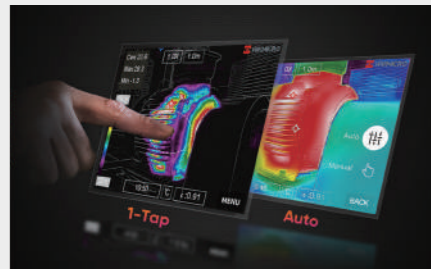
POCKET SERIES

Portable pocket-sized design and fits in any pocket



Multiple Level & Span Modes

Three Level & Span modes (manual, automatic, and 1-Tap) help you instantly improve image contrast and highlight potential problems on an intuitive 3.5" LCD Touch Screen.



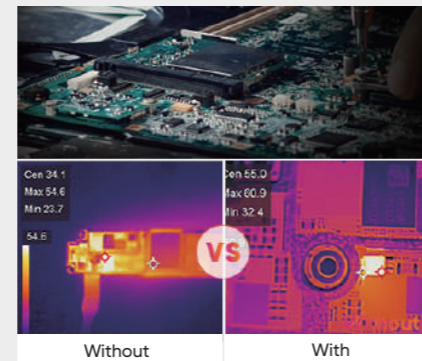
Download on-device images

Connect (Wi-Fi or Hotspot) to HIKMICRO Viewer App for transmitting pictures from camera to mobile phone. Analyze, share images, and generate reports in real-time.



Innovative Macro Mode

Using a clip-on macro lens, the Pocket series cameras can see details as small as 500 microns and allow you to take accurate temperature readings on small objects, such as components on printed circuit boards or assemblies.



On-camera Recording

Built-in 16 GB internal memory provides onboard recording and playback.



Continuous Digital Zoom

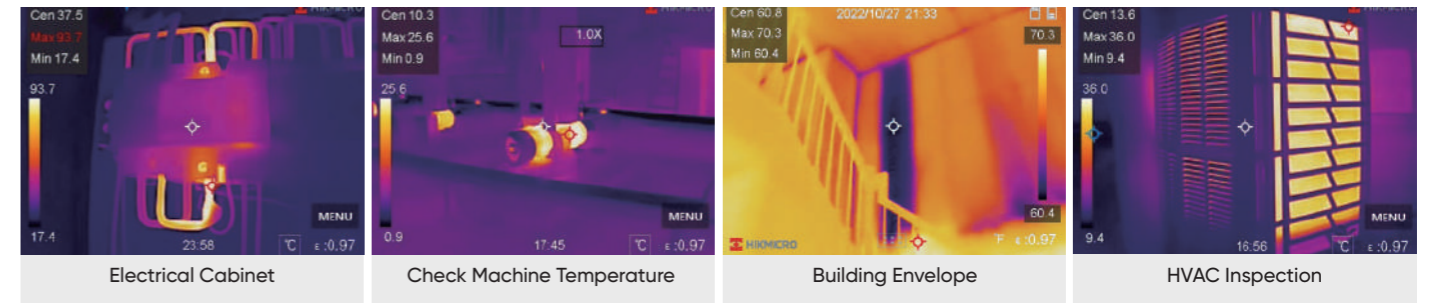
1.0x to 4.0x continuous digital zoom provides more image details.



Intuitive Interface

Swipe down or touch the icons to access all camera features and settings

APPLICATIONS



WHAT'S IN THE BOX



OPTIONAL ACCESSORIES



Model No		Pocket2
Infrared Image	IR Resolution	256 × 192 (49, 152 pixels)
	NETD	< 40 mK (@ 25 °C, F#=1.0)
	Image Frequency	25 Hz
	Field of View (FOV)	50° × 37.2°
	Minimum Focus Distance	0.3 m (0.98 ft)
	Focus Mode	Focus Free
Image Display	Visual Camera	3264 × 2448 (8 MP)
Measurement and Analysis	Object Temperature Range	-20°C to 400°C (-4°F to 752°F)
	Accuracy	Max (±2°C/3.6°F, ±2%), for the ambient temp. 15°C to 35 °C (59 °F to 95 °F) and object temp. above 0 °C (32°F)
General	Image and Video Formats	JPEG, MP4
	Wi-Fi	802.11 b/g/n (2.4 GHz and 5 GHz)
	Battery Operating Time	Approx. 4 hours

M SERIES

Advanced thermal imaging camera with full function analysis



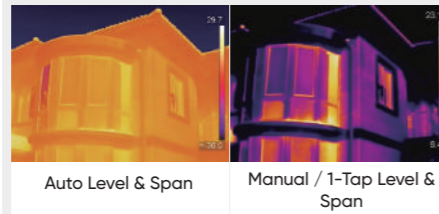
Multiple Product Options

M series products provide wide-angle and manual focus options. The manual focus with a larger focal length option (without "W") is ideal for electrical, HVAC, and mechanical inspection where focusing on specific components is critical. The "W" series features a fixed focus wide FOV making them ideal for scanning walls, floors, and large-scale items.



1-Tap Level & Span

Quickly highlights the area of the image you are interested in by narrowing the span with one tap on the **3.5" LCD touchscreen**, instantly improving image contrast and highlighting potential problems.



Interchangeable Battery System

Includes **2 interchangeable Li-ion batteries** and a dual bay charger to provide you with **up to 12 hours** of operation. You can stay powered up for even the longest inspections.



On-camera Analysis

Offers 17 measurement rules, 7 color alarm palettes and 4 image modes for powerful on-camera analysis.

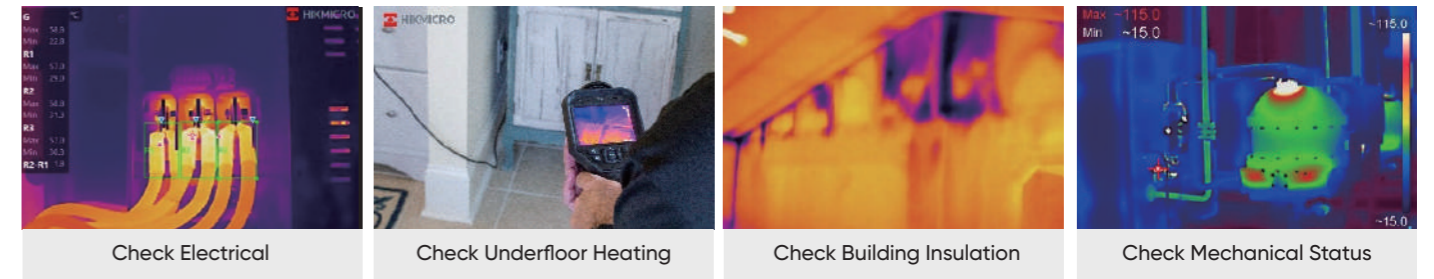
Camera Interface

Intuitive 3.5" LCD Touch Screen or interactive buttons to easily navigate to any function. Use either or both!

Multiple Image Annotations

Leave text or audio annotations within the images instead of taking notes by hand, helping to improve inspection efficiency and productivity.

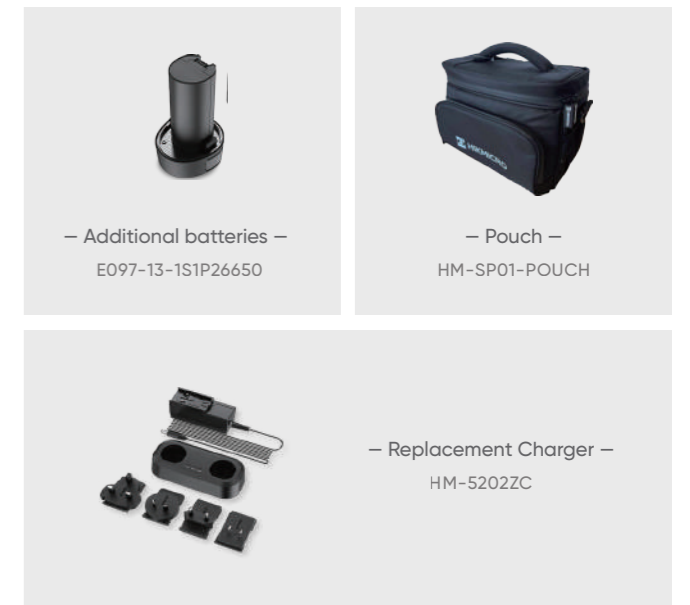
APPLICATIONS



WHAT'S IN THE BOX



OPTIONAL ACCESSORIES



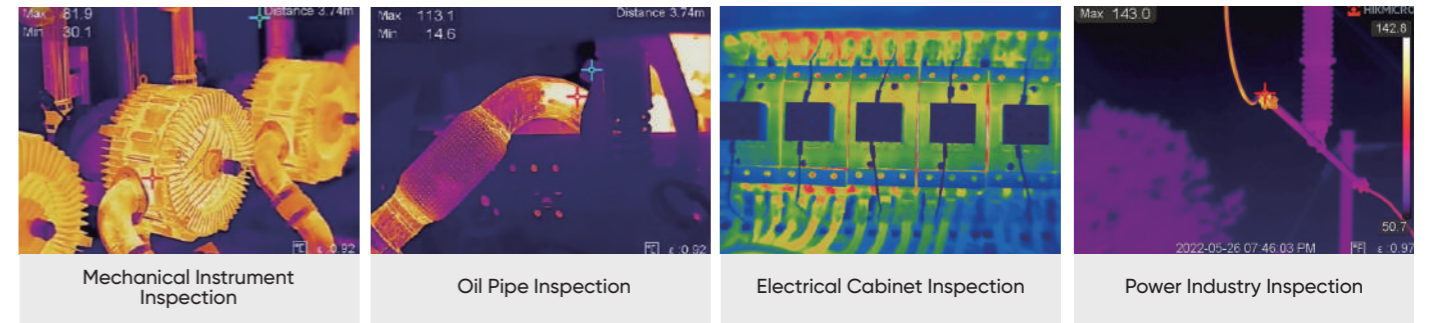
Model No		M11W	M20W	M30
Infrared Image	IR Resolution	192 × 144 (27, 648 pixels)	256 × 192 (49, 152 pixels)	384 × 288 (110, 592 pixels)
	NETD	< 40 mK (@ 25 °C, F#=1.0)		
	Image Frequency	25 Hz		
	Field of View (FOV)	37.5° × 27.9°	50° × 37.2°	37.5° × 28.5°
	Minimum Focus Distance	0.5 m (1.64 ft)	0.5 m (1.64 ft)	0.2 m (0.65 ft)
	Focus Mode	Focus Free	Focus Free	Manual Focus
Image Display	Visual Camera	3264 × 2448 (8 MP)		
Measurement and Analysis	Object Temperature Range	-20 °C to 550 °C (-4 °F to 1022 °F)		
	Accuracy	Max (±2°C/3.6°F, ±2%), for the ambient temp. 15°C to 35 °C (59 °F to 95 °F) and object temp. above 0 °C (32°F)		
General	Image and Video Formats	JPEG, MP4		
	Wi-Fi	802.11 b/g/n (2.4 GHz and 5 GHz)		
	Battery Operating Time	Approx. 6 hours	Approx. 6 hours	Approx. 4 hours

GX1 SERIES

Ultra High Resolution. More Efficient Inspection



APPLICATIONS



WHAT'S IN THE BOX



- Thermal Imager
- Hand Strap
- Rubber Front Lens and Light Protection Cap Strap
- Hand Strap Brackets (Left and Right)
- Tool Package
- Dismountable and Rechargeable Li-ion Batteries (x2)
- Power Supply for Battery Charger
- Two-bay Battery Charger
- International Use Plugs (US/EU/UK/AU) for Power Supply (x4)
- USB 2.0 A to USB Type-C Cable
- Mini HDMI to HDMI Cable
- CVBS Cable
- Hard Carrying Case
- Calibration Certificate
- Quick Start Guide
- 64GB Micro SD card

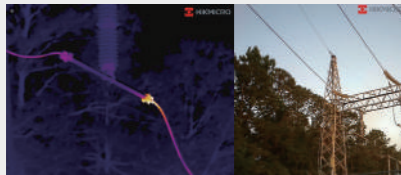
OPTIONAL ACCESSORIES



- Additional batteries – INR18650-35E-1S2P
- Sun Shield – HM-701ZJ-G01-SHIELD
- Replacement Charger – HM-5202ZC2
- Pouch – HM-SP01-POUCH

Ultra High Resolution

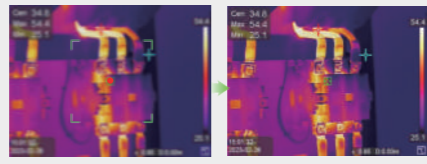
A highly sensitive HIKMICRO VOx detector (NETD < 35 mK) with 640 x 512 (327,680 pixels) IR resolution, provides a distinct thermal image of the target.



5 Focus Modes

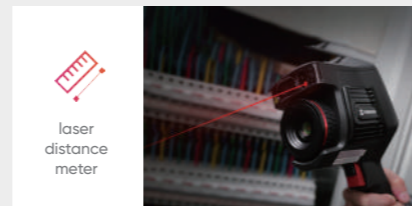
Faster inspections, sharper images, and greater accuracy.

- Continuous Autofocus
- Autofocus
- Touch AF
- Laser Assisted Focus
- Manual Focus



Embedded Laser Distance Meter

An integrated laser distance meter offers quick measurement of distances up to 50m (164ft) and area measurement (m² or ft²), more convenient in setting parameters and generating the report.



3 Add-on Lenses

Enhance your camera's capabilities with optional auto-recognition interchangeable lenses (0.5X, 2X, 3.3X) to complete coverage of narrow, or distant targets.

Simplify Inspection Process

Using the included HIKMICRO Inspector PC Software, you can simplify the inspection process by pre-planning your inspection routes, downloading them directly to the camera, and guide you from location to location while collecting imagery at each station.

Complete Image Annotations

In addition to supporting voice and text annotations, GPS and compass functions automatically add location and direction information to the image, helping to improve inspection efficiency and productivity.


3 ADD-ON LENSES CHOICES

Wide Angle Lens

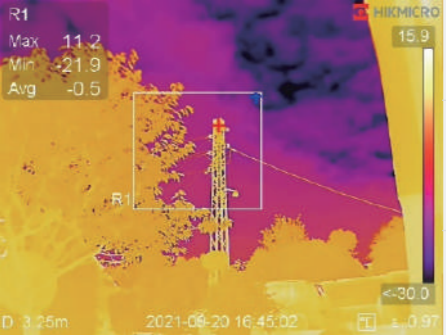
Sometimes there is not enough space to take a step back and see the whole picture. This wide-angle lens has almost twice the field of view of the standard lens. This lens is ideal for building inspections or other applications

Telephoto Lens


The telephoto lens is a widely used lens accessory that can provide up to 3.3x magnification compared to the standard lens. Ideal for small or distant targets such as power lines, manufacturing, and mining equipment, etc.




Wide Angle 0.5X
HM-G605-LENS1




Focal Length	13mm
FOV (Field of View)	G61/G61H: 48.2°(H) x 36°(V) G41/G41H: 35.4°(H) x 26.2°(V)
Min. Focusing Distance	0.2 m (0.22 yd)




Telephoto 2X
HM-G620-LENS1



Focal Length	50mm
FOV (Field of View)	G61/G61H: 12.3°(H) x 9.3°(V) G41/G41H: 9.3°(H) x 7°(V)
Min. Focusing Distance	2 m (2.19 yd)



Telephoto 3.3X
HM-G630-LENS1



Focal Length	82mm
FOV (Field of View)	G61/G61H: 7.6°(H) x 5.7°(V) G41/G41H: 5.7°(H) x 4.3°(V)
Min. Focusing Distance	3 m (3.28 yd)

CAMERA FEATURES



- Cover for USB type-c, micro SD card slot
- Visual lens
- Laser distance meter for accurate distance and area measurement
- Built-in LED lamp for working safely in dim or dark environments
- Interchangeable and auto-recognition thermal lenses
- Tripod mount lens protective cap
- Separate auto-focus and image recording trigger
- Attachment point for the hand strap bracket (left and right sides)
- Interchangeable and rechargeable li-ion battery
- Charging indicator
- Microphones for voice notes
- Speaker plays voice notes and temperature alerts
- 4.3" auto-brightness touch screen
- Navigation pad
- Manual Calibration Button
- Back button
- Button to operate the laser
- On/off button
- File button

Model No	G31	G41	G41H	G61	G61H	
Infrared Image	IR Resolution	384×288	480×360	480×360	640×480	640×480
	SuperLR	768×576	960×720	960×720	1280×960	1280×960
	NETD	< 35 mK (@ 25 °C, F#=1.0)				
	Image Frequency	25 Hz				
	Field of View (FOV)	25° × 19°	18.7° × 14°	18.7° × 14°	25° × 19°	25° × 19°
	Spatial Resolution (IFOV)	1.13mrad	0.68mrad	0.68mrad	0.68mrad	0.68mrad
	Focus Mode	Approx.2 second				
Image Display	Visual Camera	3264×2488(8MP)				
	Measurement and Analysis	Object Temperature Rang	-20 °C to 650 °C (-4 °F to 1202 °F)	-20 °C to 650 °C (-4 °F to 1202 °F)	20 °C to 2000 °C (-4 °F to 3632 °F)	-20 °C to 650 °C (-4 °F to 1202 °F)
	Accuracy	Max. (± 2°C/3.6°F, ± 2%)				
General	Image and Video Formats	JPEG, MP4				
	Wi-Fi	802.11 b/g/n (2.4 GHz and 5 GHz)				
	HDMI Interface	Yes				
	GPS & Compass	Yes				
	Battery Operating Time	Approx. 4 hours				

SP SERIES

Ultra-high performance inspection and reporting thermography camera



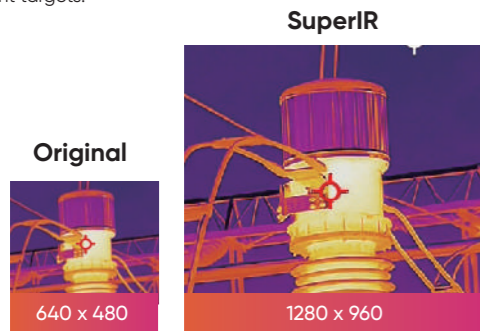
SP40, SP40H
without viewfinder



VISIT OUR WEBSITE

SuperIR

With HIKMICRO SuperIR, SP series cameras with 640 x 480 resolution detectors can capture ultra-sharp images with 4X pixels (1280 x 960), improving image quality, and allowing for more detailed analysis on smaller or distant targets.



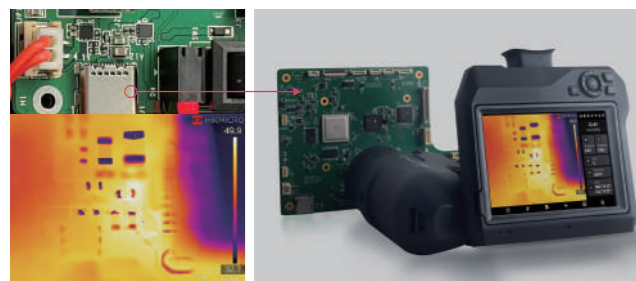
Flexible Rotating Lens and Screen

The 90° rotating screen and the 180° rotating lens design help to easily view the area around, between, above, or below the target.



Detect Tiny Faults

See details as small as 20µm with a macro lens, allowing you to take accurate temperature readings on small objects, such as components on printed circuit boards or assemblies.



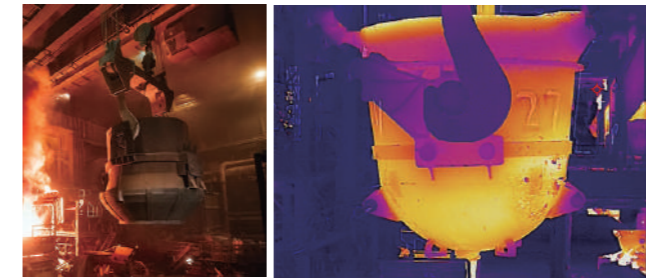
One-second Fast Focusing

Supports 5 types of focus modes (Laser Assisted AF, Continuous AF, AF, Manual Focus, Touch AF) and one-second fast focusing speed helps to save time by giving sharper images, resulting in more accurate temperature measurements.



SPxx H Series- Ultra High Temperature Range

With a measurement range of up to 2200°C (3992°F), the "H" series can handle industrial furnace applications, refractory, and inspecting tools/fixtures in metal smelting at these extreme temperatures.



Designed for Outdoors

Features IP54 rugged housing, 1024 x 768 OLED electronic viewfinder*, and auto-brightness 5" color LCD touch display make it easy to conduct outdoor inspections under bright, challenging light and tough conditions. (*SP60H, SP60 only)



CAMERA FEATURES



Multiple Image Annotations

Add 60-second voice clips or 200 text characters notes to your images for later review and reminders. The camera automatically adds GPS and compass directions for geolocation location and orientation.



Multiple Image Modes

Thermal, Fusion, PIP and Optical modes to suit your preferred view.



Simplify Inspection Process

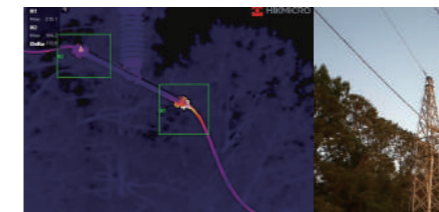
Using the included HIKMICRO Inspector PC Software, you can simplify the inspection process by pre-planning your inspection routes, downloading them directly to the camera, and guide you from location to location while collecting imagery at each station.



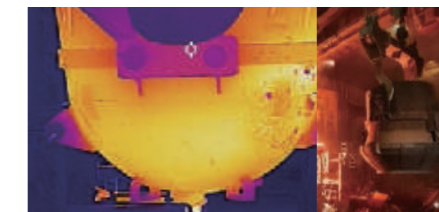
Radiometric Images and Video Analysis

Supports recording of radiometric images and video to the onboard SD card, for post analysis on your PC and the no charge HIKMICRO analyzer software.

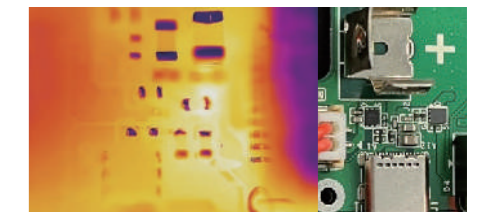
APPLICATIONS



Utility Inspection



Industrial Inspection



Electronic Testing






WHAT'S IN THE BOX






- Thermal Imager
- Hand Strap
- Neck Strap
- Rubber Viewfinder Cap
- Camera Lens Caps
- Interchange and Rechargeable Li-ion Batteries (x2)
- Power Supply for Battery Charger
- Two-bay Battery Charger
- International Use Plugs (US/EU/UK/AU) for Power Supply (x4)
- USB 2.0 A to USB Type-C Cable
- Mini HDMI to HDMI Cable
- USB Type-C Cable to USB Type-C Cable
- Hard Carrying Case
- Calibration Certificate
- Quick Start Guide
- 64GB SD card
- Lenses (according to the ordering model)



OPTIONAL ACCESSORIES

HM-SP630-LENS 3X Ultra Telephoto Lens 77.4mm  SP40/SP40H: 6"(H) x 4.5"(V) SP60/SP60H: 8"(H) x 6"(V)	HM-SP620-LENS 2X Telephoto Lens 51.4 mm  SP40/SP40H: 9"(H) x 6.8"(V) SP60/SP60H: 12"(H) x 9"(V)	HM-SP610-LENS 1X Standard Telephoto Lens 25 mm  SP40/SP40H: 18.7"(H) x 14"(V) SP60/SP60H: 24.8"(H) x 18.7"(V)	HM-SP605-LENS 0.5X Wide Angle Lens 12.6 mm  SP40/SP40H: 37.3"(H) x 27.8"(V) SP60/SP60H: 50"(H) x 37.3"(V)	HM-SP620-MACRO 20µm Macro Lens 20µm minimum imaging target size 3cm focusing distance  SP40/SP40H: 4.95"(H) x 3.74"(V) SP60/SP60H: 12.9"(H) x 10"(V)
---	---	---	---	---

Note: Lenses are factory calibrated for temperature with the camera when purchased. If lenses are purchased separately at a later date, the camera and lens will need to be temperature calibrated (if desired) at a calibration center.

HM-20322ZC <ul style="list-style-type: none"> Replacement Power Supply for Battery Charger Two-bay Battery Charger International Use Plugs (US/EU/UK/AU) for Power Supply (x4) 	HM-7250DC <ul style="list-style-type: none"> Additional Interchange and Rechargeable Li-ion Battery 	HM-SP01-POUCH <ul style="list-style-type: none"> M/G/SP Series Pouch 
--	---	--

Model No		SP40	SP40H	SP60	SP60H
Infrared Image	IR Resolution	480 × 360 (172,800 pixels)		640 × 480 (307,200 pixels)	
	SuperIR	960 × 720 (691,200 pixels)		1280 × 960 (1,228,800 pixels)	
	NETD	< 30 mK (@ 25 °C, F#=1.0)			
	Image Frequency	25 Hz			
	Field of View (FOV)	SP40/SP40H: L6: 6° × 4.5°; L9: 9° × 6.8°; L19: 18.7° × 14°; L37: 37.3° × 27.8° SP60/SP60H: L8: 8° × 6°; L12: 12° × 9°; L25: 24.8° × 18.7°; L50: 50° × 37.3°			
Focus Mode	Laser Assisted AF/Continuous AF/AF/Manual Focus/Touch AF				
Image Display	Visual Camera	3264 × 2448 (8 MP)			
	Display	1280 × 720 Resolution, 5" LCD Touch Screen			
	Viewfinder	N/A		1024 × 768 pixels OLED	
Measurement and Analysis	Object Temperature Range	-20°C to 650°C (-4°F to 1202°F)	-40°C to 2200°C (-40°F to 3992°F)	-20°C to 650°C (-4°F to 1202°F)	-40°C to 2200°C (-40°F to 3992°F)
	Accuracy	SP60/SP40: Max. (± 2°C/3.6°F, ± 2%); SP60H/SP40H: ±1°C (±1.8°F): 0 to 100°C (32 to 212°F); ±1%: 100 to 150°C (212 to 302°F); ±2°C (±3.6°F): -40 to 0°C (-40 to 32°F); ±2%: 150 to 2200°C (302 to 3992°F)			
General	Image and Video Formats	JPEG, MP4			
	Wi-Fi	802.11 b/g/n (2.4 GHz and 5 GHz)			

ACOUSTIC CAMERAS

Preventive measurements are required in many industrial scenarios to ensure the proper operation of equipment. Acoustic Camera is a professional product for sound source localization. It provides an easy and effective way to locate pressurized air leaks in industrial environments or detect partial discharge in high-voltage systems. It can be used by collecting sound and filtering noise, the results presented on top of a digital picture allow you to quickly find the source of the problems. even in factories, substations, or the oil and gas industry. Adopting Acoustic camera can discover potential safety risks, minimize troubleshooting, and save extra costs of equipment failures and downtime.

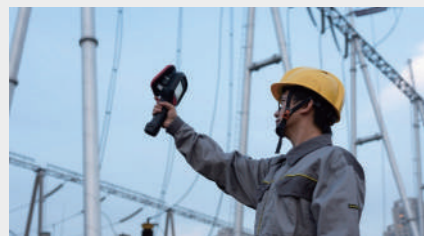
AI SERIES

Pro tool for sound source localization



64 Microphones, Real-time Sound Visualization

With 64 Low-noise MEMS microphones and adjustable bandwidth range from 2 kHz to 60 kHz, AI56 provides an easy and effective way to locate the pressurized air leaks in industrial environments or detecting partial discharge in high-voltage systems



Maximize Energy Savings

Adopting this lightweight and easy-to-use tool, you can discover the potential safety risks, minimize troubleshooting, and save extra costs of equipment failures and downtime.



Automatic Noise and Interference Filtering

Signal-to-noise ratio up to 70dB, noise filtering through algorithm. the larger the value indicates that the noise in the link is smaller relative to the effective signal.



10.5h

Long Battery Life

Reliable 10.5 hours continuous running.

940g

Light Weight

940g(2.072lb) only, one-handed operation, more convenient to use – you can complete the detection work by yourself, a device is a professional team.

①

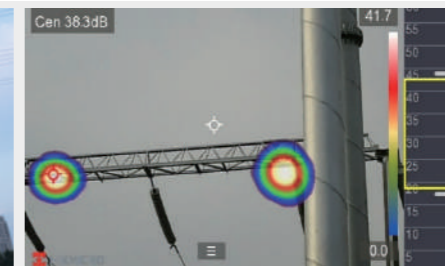
Real-time text and voice annotation

Voice note Max. 60 Seconds , text note Max. 200 Characters.

APPLICATIONS



Partial Discharge Detection



Gas Leakage Detection

WHAT'S IN THE BOX



- Acoustic Imaging Camera (x1)
- Battery (x3)
- Charging Base (x1)
- Power Adapter (x1)
- Adapter (x4)
- Hand Strap (x1)
- USB Cable (x1)
- HDMI Cable (x1)
- SD Card (x1)
- MIC Protective Case (x 1)
- Accessories Bag (x1)
- Quick Start Guide (x1) Carrying Case (x1)

Model No	AI56	
Acoustic	Number of Microphones	64
	Bandwidth	2kHz~65kHz
	Distance	0.3m~100m
	Camera FOV	51.8°× 36.4°
	Leak Rate	>0.008 l/min @ 6 bar from 0.5 m (1.64 ft) >0.013 l/min @ 5 bar from 1 m (3.28 ft)
	Signal Noise Ratio	70dB
Optical Module	Field of View (FOV)	51.8°× 36.4°
Image Display	Display	800 × 480 Resolution, 4.3"LCD Touch Screen
	Digital Zoom	1.0x to 8.0x continuous
General	Weight	Approx. 940 g (2.07 lb)
	Battery Operating Time	Approx. 3.5 hours

DISTRIBUÉ PAR / DISTRIBUTED BY:



QUEBEC
164, St-Jean Baptiste
Mercier, QC J6R 2C2
T: (450) 691-9090

ONTARIO
275 Sheldon Drive, Unit 3
Cambridge, ON N1T 1A3
T: (519) 894-9069

1-800-361-3630

WWW.QNDE.CA



MOBILE APPLICATIONS AND PC SOFTWARE

Gathering images through field inspections is the first step in delivering high-value, actionable findings to your customers. While at the site, HIKMICRO Viewer for mobile devices lets you immediately edit, call out, and send urgent findings to interested parties for quick decisions. When back at the office, HIKMICRO Analyzer for the PC is a fully featured analysis and reporting tool to manage radiometric images and video files. Create reports and add your company logo to one of the pre-made templates or edit and save your own templates. For large jobs with multiple inspection points requiring repeat inspections, we created HIMICRO Inspector that's compatible with our G and SP series cameras.

The HIKMICRO suite of software solutions provides you with the most professional portfolio of camera software designed to increase productivity and deliver results to your customers. Best of all, it's available at no extra charge or recurring fees.

HIKMICRO VIEWER

WIRELESS ANALYSIS, REPORTING AND SHARING

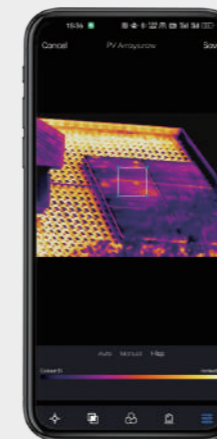


The HIKMICRO Viewer is a powerful and intuitive mobile application designed to help users wirelessly stream video, analyze thermal images and video, quickly create reports and share with customers and coworkers in the field. It allows you to import stored files from the camera to the mobile device. Use the app to thermally adjust levels and spans with one touch, change color palettes, adjust parameters, and more.

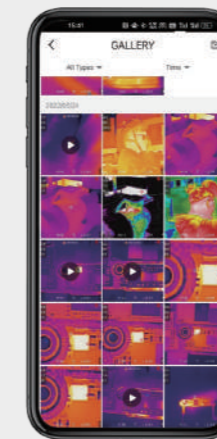
- ♦ Free license
- ♦ Import images and videos from camera
- ♦ Quick reporting and sharing
- ♦ Screen Stream Mirroring
- ♦ Advanced measurement and image analysis
- ♦ After-sales contacts and online support services



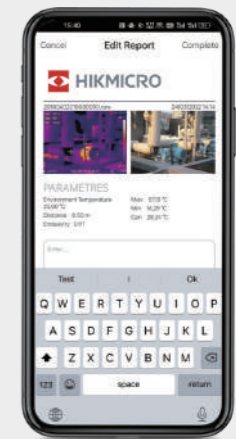
Image manipulation and analysis



Import images from your HIKMICRO camera



Generate reports in the field



GET IT ON
Google Play



Download on the
App Store

HIKMICRO ANALYZER

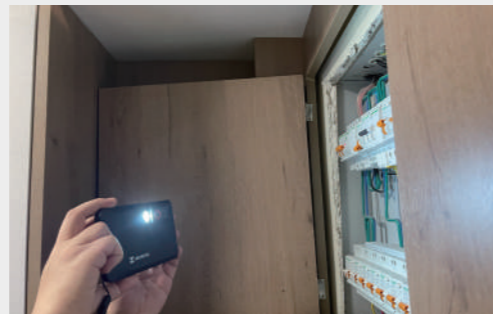


EFFICIENT, POWERFUL THERMAL ANALYSIS AND REPORTING

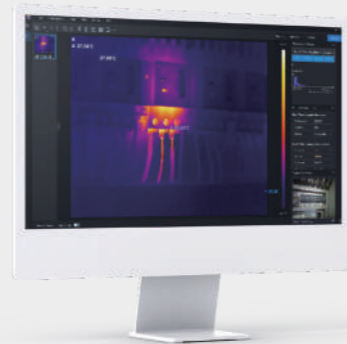
HIKMICRO Analyzer is a powerful and free licensed PC software designed to help users manage and analyze thousands of thermal images and videos and quickly create professional reports. Compatible with files from HIKMICRO handheld thermal cameras, providing the features you need to simplify your workflow and increase your productivity.

- ◆ Free license
- ◆ Import, edit and manage files
- ◆ View, edit and analysis radiometric images and videos
- ◆ Advanced measurement and image analysis
- ◆ Batch processing with all image and measurement controls
- ◆ Quick reporting with pre-defined or customized templates

Capture Field Images



Powerful Analysis Tools



Generate Multi-page Reports



* Customize report templates with your company logo

HIKMICRO INSPECTOR

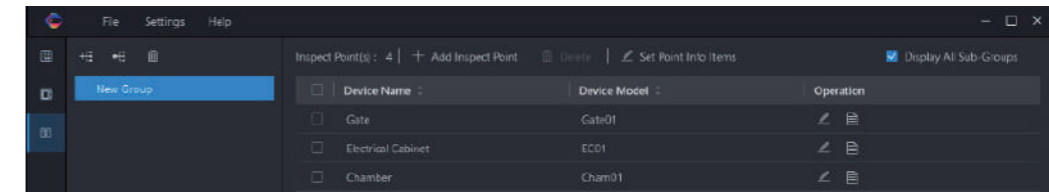


SIMPLIFY AND ORGANIZE INSPECTION WORKFLOWS

HIKMICRO Inspector is a powerful and free licensed PC software designed to help inspectors simplify the inspection process and complete it efficiently. It allows you to pre-plan your inspection routes, download and run them directly to a HIKMICRO inspection route-enabled camera*, and guide you from location to location while collecting imagery at each station. Once you've completed an inspection, you can import images, data, and annotations into the HIKMICRO analyzer for professional analysis and report generation, cutting reporting time.

- ◆ Free license
- ◆ Pre-plan your inspection routes
- ◆ View, edit and manage inspection routes
- ◆ Link to HIKMICRO Analyzer for image analysis and report generation

PRE-PLAN YOUR INSPECTION ROUTES

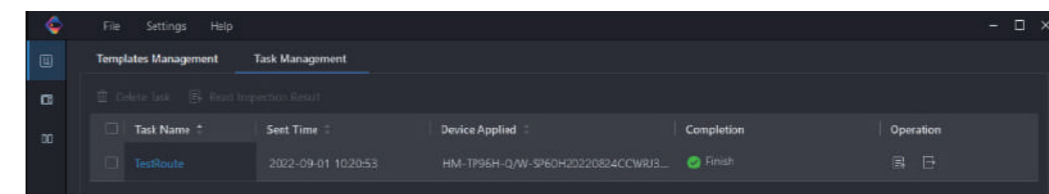


THERMAL INSPECTION ON SITE



- ! Pending
- ✓ Normal
- L Exception

ANALYSIS AND REPORTING



DISTRIBUÉ PAR / DISTRIBUTED BY:



QUEBEC
164, St-Jean-Baptiste
Mercier, QC J6R 2C2
T: (450) 691-9090

ONTARIO
275 Sheldon Drive, Unit 3
Cambridge, ON N1T 1A3
T: (519) 894-9069

www.qnde.ca

