

MEETS STANDARDS FOR



EN ISO:3059

on UV-A output for the removal of excess penetrant

SPECTROLINE[®]
NDT

EDGE™ 4

LED UV-A Overhead Wash Station Lamp

EDG-4W

The **EDGE™ 4** is a flood lamp engineered specifically for wash stations. It provides a very wide area of coverage without a high intensity. The IP65-rated housing allows the lamp to work in wet and dirty environments. Heat sinks keep the lamp cool without the need for a fan, so no dust or water can enter. Four UV-A LEDs provide a wide, uniform beam that is highly consistent and reliable.

IP65 RATED



Dust-Tight & Water Resistant



NDT Wash Stations



Wide Coverage Area

EASILY MOUNTABLE

For overhead inspection or in-line applications

EDG-4W

FANLESS

Cool running design that uses state-of-the-art heat sinks

FLEXIBLE ARM

For mounting at specific angles

WIDE COVERAGE AREA

4 UV-A LEDs

Provide large area of coverage

WATER RESISTANT!



UV-A LENSES

Virtually eliminate clouding/solarization

IP65 RATED



CERTIFICATE OF LIGHT OUTPUT
included with lamp

EDGE™ 4

LED UV-A Overhead Wash Station Lamp



CERTIFICATE OF LIGHT OUTPUT

	EDG-4W
Nominal Steady-State Intensity \odot at 48 in (122 cm)	1,400 $\mu\text{W}/\text{cm}^2$
UV-A Coverage Area at 48 in (122 cm) at minimum 200 $\mu\text{W}/\text{cm}^2$	22 x 22 in (56 x 56 cm)
Nominal Steady-State Intensity \odot at 72 in (183 cm)	670 $\mu\text{W}/\text{cm}^2$
UV-A Coverage Area at 72 in (183 cm) at minimum 200 $\mu\text{W}/\text{cm}^2$	24 x 24 in (61 x 61 cm)
Nominal Steady-State Intensity \odot at 96 in (244 cm)	380 $\mu\text{W}/\text{cm}^2$
UV-A Coverage Area at 96 in (244 cm) at minimum 200 $\mu\text{W}/\text{cm}^2$	25 x 25 in (63.5 x 63.5 cm)
LED Filter	Protective clear filter

Technical Features

Light Source:	(4) UV-A LEDs
Lamp Style:	Panel flood lamp
Dimensions (L x W x H):	11 x 14 x 9 in (28 x 36 x 23 cm)
Weight:	14 lb (6.4 kg)
Power Requirements:	AC power (main AC power cord supplied with the unit)*
Cooling System:	Fanless

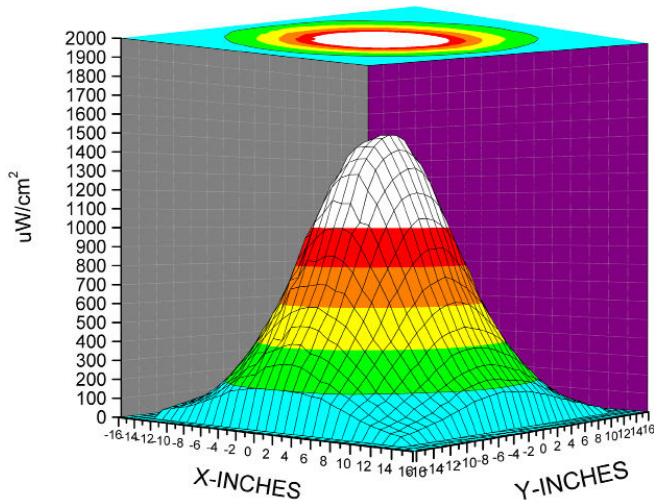
**(Also available in 100-120V, 230V and 240V versions)*



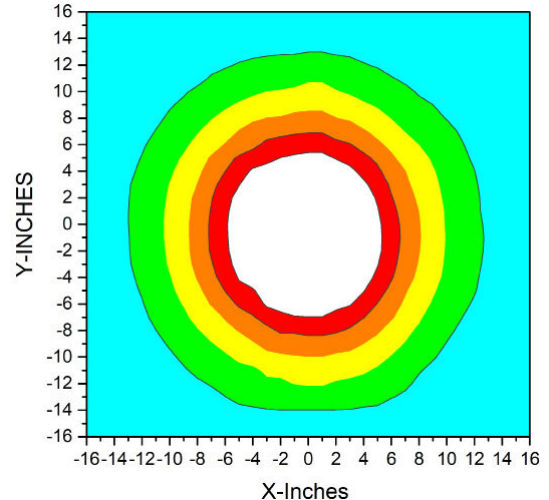
\odot UV-A intensity reading taken with the Spectroline® AccuMAX™ Series meter, and is factory set to the value shown.

UV-A Beam Profiles

Surface Contour Profile for EDG-4W at 4 ft (122 cm)



Beam Irradiance Profile for EDG-4W at 4 ft (122 cm)



DISTRIBUÉ PAR / DISTRIBUTED BY:



QUEBEC

164, St-Jean-Baptiste
Mercier, QC J6R 2C2
T : (450) 691-9090

ONTARIO

275 Sheldon Drive, Unit 3
Cambridge, ON N1T 1A3
T : (519) 894-9069

www.qnde.ca

